

SSC-213

**A GUIDE FOR ULTRASONIC TESTING AND
EVALUATION OF WELD FLAWS**

**This document has been approved
for public release and sale; its
distribution is unlimited.**

SHIP STRUCTURE COMMITTEE

1970

SHIP STRUCTURE COMMITTEE

MEMBER AGENCIES:

UNITED STATES COAST GUARD
NAVAL SHIP SYSTEMS COMMAND
MILITARY SEA TRANSPORTATION SERVICE
MARITIME ADMINISTRATION
AMERICAN BUREAU OF SHIPPING

ADDRESS CORRESPONDENCE TO:

SECRETARY
SHIP STRUCTURE COMMITTEE
U.S. COAST GUARD HEADQUARTERS
WASHINGTON, D.C. 20591

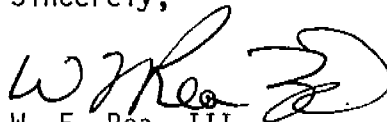
1970

Dear Sir:

To maintain the high degree of safety and reliability in ship fabrication, the Ship Structure Committee has completed a project that provides an ultrasonic inspection guide that retains the comparable radiographic standard provided earlier.

The results of this project are contained in this report.

Sincerely,



W. F. Rea, III
Rear Admiral, U.S. Coast Guard
Chairman, Ship Structure Committee

SSC-213
Final Report
on
Project SR-188, "Ultrasonic Test Guide"
to the
Ship Structure Committee

A GUIDE FOR ULTRASONIC TESTING AND EVALUATION
OF WELD FLAWS

by
R. A. Youshaw
U.S. Naval Ordnance Laboratory

under

Department of the Navy
Naval Ship Engineering Center
Project No. SF 35422306
Task 02022

*This document has been approved for public
release and sale; its
distribution is unlimited.*

U. S. Coast Guard Headquarters
Washington, D.C.

1970

ABSTRACT

This document presents procedures and acceptance limits for contact ultrasonic inspection of steel butt welds in the thickness range of 1/4 to 2 inches. The acceptance limits described in the following sections are compatible with those set forth in SSC-177, "Guide for Interpretation of Nondestructive Tests of Welds in Ship Hull Structures" for radiographic inspection and should therefore result in satisfactory ship welds.

SHIP STRUCTURE COMMITTEE

The SHIP STRUCTURE COMMITTEE is constituted to prosecute a research program to improve the hull structures of ships by an extension of knowledge pertaining to design, materials and methods of fabrication.

RADM W. F. Rea, III, USCG, Chairman
Chief, Office of Merchant Marine Safety
U. S. Coast Guard Headquarters

Capt. W. R. Riblett, USN
Head, Ship Engineering Division
Naval Ship Engineering Center

Mr. E. S. Dillon
Deputy Chief
Office of Ship Construction
Maritime Administration

Capt. T. J. Banvard, USN
Maintenance and Repair Officer
Military Sealift Command

Mr. C. J. L. Schoefer, Vice President
American Bureau of Shipping

SHIP STRUCTURE SUBCOMMITTEE

The SHIP STRUCTURE SUBCOMMITTEE acts for the Ship Structure Committee on technical matters by providing technical coordination for the determination of goals and objectives of the program, and by evaluating and interpreting the results in terms of ship structural design, construction and operation.

NAVAL SHIP ENGINEERING CENTER

Mr. J. B. O'Brien - Acting Chairman
Mr. J. B. O'Brien - Contract Administrator
Mr. G. Sorkin - Member
Mr. H. S. Sayre - Alternate
Mr. I. Fioriti - Alternate

U. S. COAST GUARD

LCDR C. S. Loosmore, USCG - Secretary
CDR C. R. Thompson, USCG - Member
LCDR J. W. Kime, USCG - Alternate
Capt. L. A. Colucciello, USCG - Alternate

MARITIME ADMINISTRATION

Mr. F. Dashnaw - Member
Mr. A. Maillar - Member
Mr. R. Falls - Alternate
Mr. W. G. Frederick - Alternate

NATIONAL ACADEMY OF SCIENCES

Mr. A. R. Lytle, Liaison
Mr. R. W. Rumke, Liaison
Prof. R. A. Yagle, Liaison

AMERICAN BUREAU OF SHIPPING

Mr. S. G. Stiansen - Member
Mr. F. J. Crum - Member

SOCIETY OF NAVAL ARCHITECTS & MARINE ENGINEERS

Mr. T. M. Buermann, Liaison

OFFICE OF NAVAL RESEARCH

Mr. J. M. Crowley - Member
Dr. W. G. Rauch - Alternate

AMERICAN IRON AND STEEL INSTITUTE

Mr. J. R. LeCron, Liaison

NAVAL SHIP RESEARCH & DEVELOPMENT CENTER

Mr. A. B. Stavovy - Alternate

BRITISH NAVY STAFF

Dr. V. Flint, Liaison
CDR P. H. H. Ablett, RCNC, Liaison

MILITARY SEALIFT COMMAND

Mr. R. R. Askren - Member
Lt. J. G. T. E. Koster, USN, - Member

WELDING RESEARCH COUNCIL

Mr. K. H. Koopman, Liaison
Mr. C. Larson, Liaison

CONTENTS

| | |
|--|----|
| SCOPE. | .1 |
| TEST METHOD. | .1 |
| PERSONNEL QUALIFICATION. | .3 |
| CALIBRATION STANDARDS. | .4 |
| INSTRUMENT CALIBRATION | .4 |
| WELD INSPECTION. | .5 |
| DISCONTINUITY LENGTH DETERMINATIONS. | .5 |
| DISCONTINUITY EVALUATION | .8 |
| RECORD OF INSPECTION | .8 |
| GLOSSARY OF TERMS. | 11 |

SCOPE

This document presents procedures and acceptance limits for contact ultrasonic inspection of steel butt welds in the thickness range of 1/4 to 2 inches. The acceptance limits described in the following sections are compatible with those set forth in SSC-177, "Guide for Interpretation of Nondestructive Tests of Welds in Ship Hull Structures" for radiographic inspection and should therefore result in satisfactory ship welds. Occasions may arise where radiographic inspection could provide additional information.

TEST METHOD

General - The procedures given apply to the contact ultrasonic inspection of butt welds. Weld inspection is accomplished by introducing shear waves into a plate at a selected angle and manipulating the transducer so as to scan the entire weld, Fig. A-1.

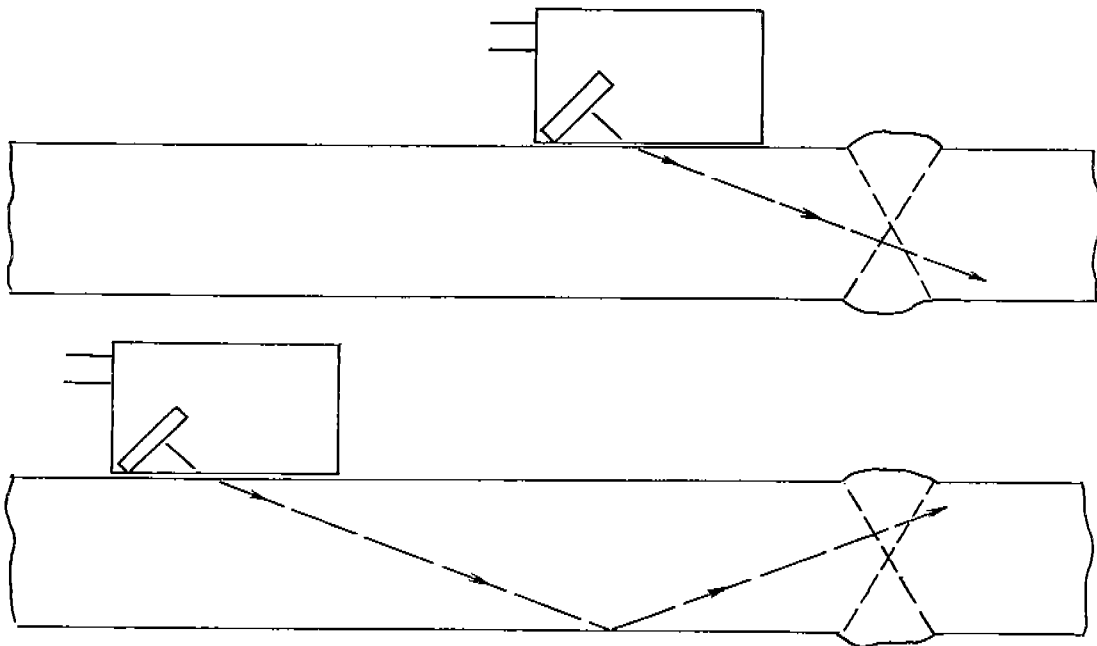


FIG. A-1. TECHNIQUE FOR INSPECTING BUTT WELDS WITH SHEAR WAVES

Equipment - The ultrasonic instrument shall be of the pulse-echo type with an A-scan presentation. It shall be capable of generating, receiving and displaying screen pulses from 1 to 5 MHz on the cathode ray tube. The instrument shall have a circuitry to provide a continuously increasing amplification with respect to time or distance of travel. A calibrated decibel attenuator control is recommended. Battery

powered equipment must contain an alarm to signal battery depletion prior to instrument shut-off due to battery exhaustion.

Transducers - The maximum dimension (manufacturers' specifications) of the transducer active element shall not exceed one inch. A ratio of 2:1 width to height of the active element is recommended. A nominal test frequency of 2.25 MHz is recommended.

Selection of Probes - The primary consideration for selecting a probe shall be the thickness of the plate. The following shear wave angles are recommended:

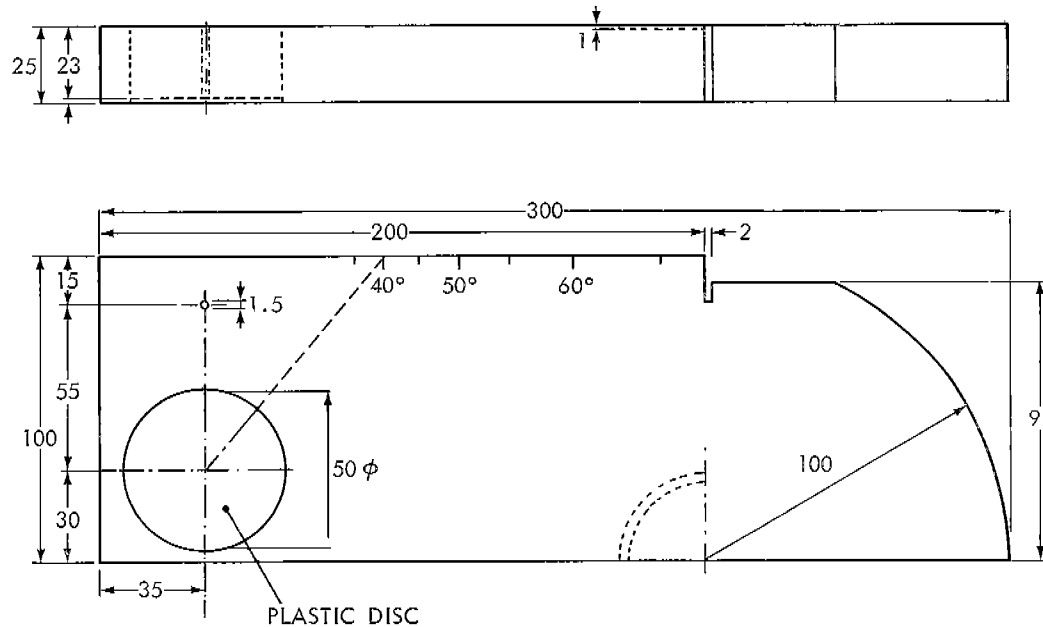
70° for plate thicknesses 1/4" to 1/2"

60° or 70° for plate thicknesses 1/2" to 1-1/2"

45° or 60° for plate thicknesses 1-1/2" to 2-1/2".

The transducer angle should be checked periodically with the International Institute of Welding Test Block, Fig. A-2.

Couplant - A liquid such as glycerin diluted with alcohol or water and to which a wetting agent has been added is recommended for acoustic coupling between the transducer and the plate. Most oils are acceptable. For overhead work and for places of difficult access certain types of grease may



NOTE: ALL DIMENSIONS IN MILLIMETERS
1 INCH = 25.4 MM

FIG. A-2. INTERNATIONAL INSTITUTE OF WELDING TEST BLOCK FOR ULTRASONIC CALIBRATION

prove useful. Any couplant should be removed upon completion of the inspection.

Surface Preparation - The average plate as received from the mill has a surface that is smooth enough for ultrasonic inspection. Plate with loose scale, flaked paint, excess rust, or pitting will require grinding. After welding, the surface of the base metal where the probe is to be manipulated should be cleaned of weld splatter. If surface irregularities on the weld bead interfere with the ultrasonic test or cause difficulties in interpretation then the weld bead should be ground reasonably smooth.

Base Metal Inspection - Although the presence of laminations in the base metal may not be a basis for rejection, these reflectors may mask a part of the weld from the ultrasonic beam, Fig. A-3, or cause the operator to incorrectly locate a discontinuity, Fig. A-4. Laminations can be detected ultrasonically with a straight beam (longitudinal waves). When laminations are encountered, the inspection should be made from the other side of the weld.

PERSONNEL QUALIFICATION

Supplement C, Ultrasonic Testing Method, TC-1A Recommended Practice, American Society for Nondestructive Testing, shall apply. Ultrasonic testing may be carried out by a Level II operator or by a Level I operator under the direct supervision of a Level II operator.

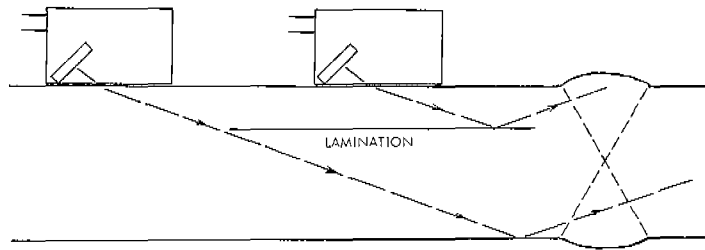


FIG. A-3. MASKING EFFECT OF A BASE METAL LAMINATION

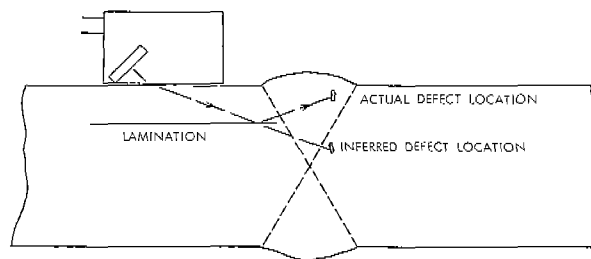


FIG. A-4. POSITION ERRORS INTRODUCED BY BASE METAL LAMINATION

CALIBRATION STANDARDS

A test block shall be prepared from material experimentally determined to be defect free and which is acoustically similar to the work material. This block should be 1-1/4" thick with a series of 1/16" diameter drilled holes spaced to provide path lengths equivalent to the longest and shortest path lengths to be used in the weld inspection. Intermediate distances should also be provided. The scanning surfaces should be approximately 250 RMS, prepared by the grinding method with the direction of grind parallel to the long dimension of the test block. Figure 5 illustrates an acceptable design.

SURFACE FINISH ON THE SCANNING SURFACES TO BE APPROXIMATELY 250 RMS PREPARED BY GRINDING METHOD WITH THE DIRECTION OF GRIND PARALLEL TO THE LONG DIMENSIONS OF THE BLOCK.

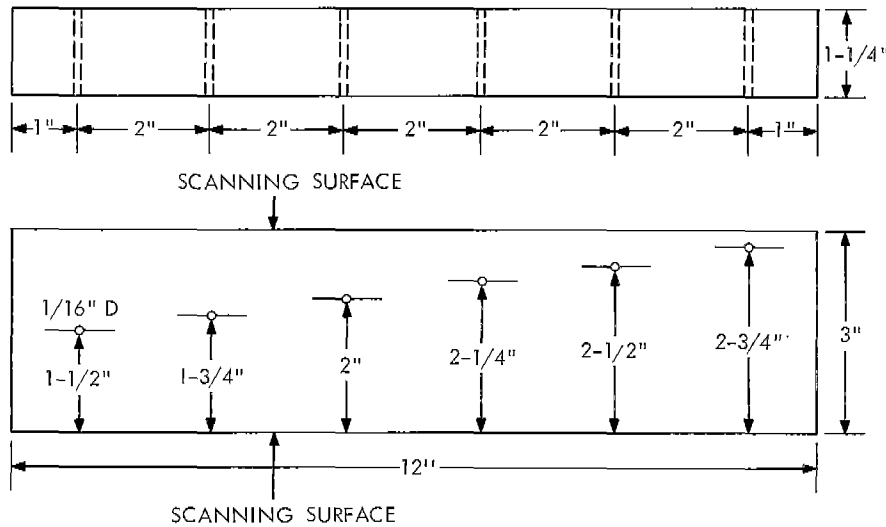


FIG. A-5. TYPICAL REFERENCE CALIBRATION STANDARD

INSTRUMENT CALIBRATION

Two levels of signal amplitude are defined in this Guide - ARL (Amplitude Reject Level) and DRL (Disregard Level). These two levels are established as follows:

The delay controls are used to position the initial pulse at the left of the viewing screen at a location marked zero on a reticule or screen scale. The instrument range controls can then be adjusted to display signals from the reference calibration drilled holes for the distances to be considered.

The distance amplitude correction controls are to be adjusted to compensate for signal loss due to distance of travel, i.e., the height of signals from all the reference

drilled holes should be made equal.

When a decibel attenuator is available, the instrument gain control is to be adjusted to set the equalized signals from the reference reflectors at 40% of full screen height, Fig. A-6. The gain is then increased by 6 decibels. At this setting, the ARL is 6 decibels above the 40% line and the DRL (screen height below which indications are to be disregarded) shall be the 40% line, Fig. A-6.

When a decibel attenuator is not available, the instrument gain control is to be adjusted to set the equalized signals from the reference reflectors at 80% of full screen height, Fig. A-7. For this setting the 40% line shall be the DRL and the 80% line shall be the ARL, Fig. A-7.

In both of the above cases the calibration should be checked frequently.

WELD INSPECTION

Longitudinal defects are found by directing the sound beam normal to the length of the weld and moving the transducer back and forth, Fig. A-8, to scan the entire weld. Simultaneously, the transducer is oscillated through a small angle. The back and forth motions should be repeated at intervals which do not exceed 80% of the width of the transducer as the probe is moved along the weld.

Transverse defects are detected as follows:

- a. For welds ground smooth the transducer is placed on top of the weld and moved along its length, Fig. A-9.
- b. For welds not ground smooth the transducer is placed alongside and not quite parallel to the weld and moved along the length, Fig. A-10.

The entire weld and heat affected zone should be scanned. The weld should be inspected from both sides of one surface.

DISCONTINUITY LENGTH DETERMINATIONS

When discontinuities are detected, the sound beam should be directed so as to maximize the signal amplitude. The transducer is then moved parallel to the discontinuity and away from the position of maximum signal amplitude. The extremity of the discontinuity is defined as the point at which the signal amplitude drops to one-half of the peak value. This point is marked using the center line of the wedge as an index. In a similar manner, the other extremity is found and the distance between marks is defined as the length of the discontinuity. The minimum recordable length of a discontinuity shall be 1/8".

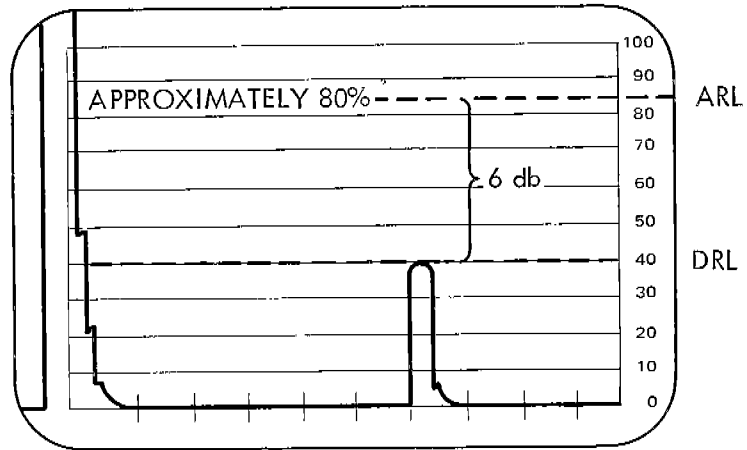


FIG. A-6. TYPICAL VIEWING SCREEN CALIBRATION FOR INSTRUMENTS WITH DECIBEL ATTENUATION CONTROLS

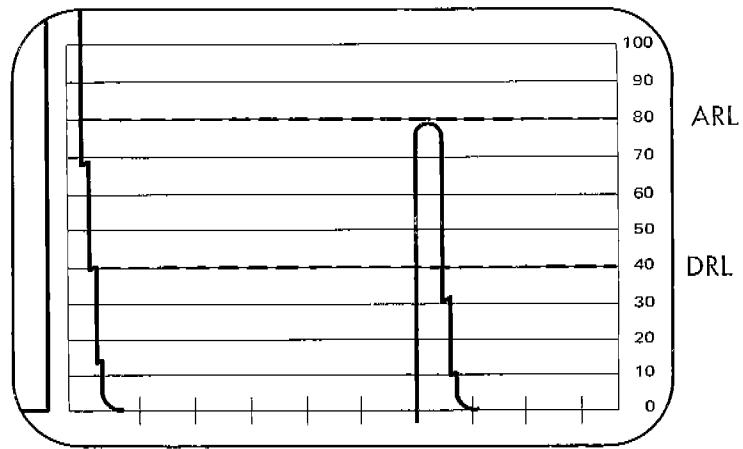
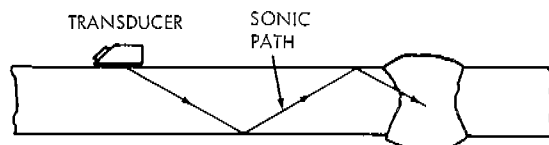


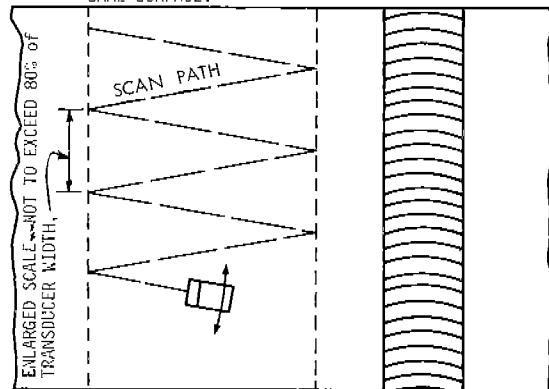
FIG. A-7. TYPICAL VIEWING SCREEN CALIBRATION FOR INSTRUMENTS WITHOUT DECIBEL ATTENUATION CONTROLS

NOTE: CALIBRATION IS PERFORMED WITH THE REFLECTION OBTAINED FROM THE WALL OF A 1/16" DRILLED HOLE USING DISTANCE-AMPLITUDE CORRECTIONS.



(a)

NOTE: USE SIMILAR SCAN PATH ON OPPOSITE SIDE OF WELD ON SAME SURFACE.



(b)

FIG. A-8. TECHNIQUE FOR INSPECTING BUTT WELDS WITH SHEAR WAVES

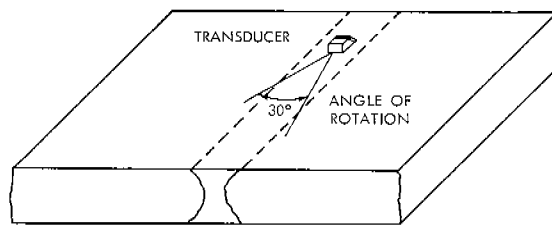


FIG. A-9. SUPPLEMENTARY TECHNIQUE FOR INSPECTING BUTT WELDS WHEN THE WELD BEAD IS GROUND FLUSH

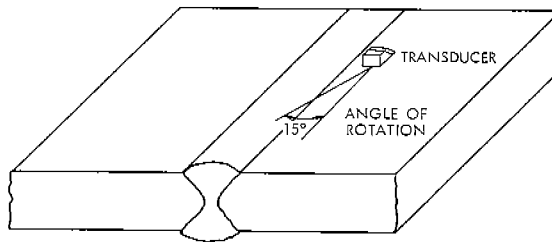


FIG. A-10. SUPPLEMENTARY TECHNIQUE FOR INSPECTING BUTT WELDS WHEN THE WELD BEAD IS NOT GROUND FLUSH

DISCONTINUITY EVALUATION

Discontinuities which do not produce signal amplitudes equal to or greater than the DRL, Fig. A-11, shall be disregarded.

Discontinuities which cause signal amplitudes equal to or greater than the DRL but less than the ARL, Fig. A-12, require a length determination and are evaluated as follows:

- a. Defects with length greater than $\frac{1}{2} T$ where T is the thickness of the plate are unacceptable.
- b. For multiple indications, where L is the length of the larger discontinuity, if the separation distance is less than 6L then the sum of the adjacent lengths shall not exceed $\frac{1}{2} T$. If the separation distance is more than 6L then the cumulative length in any 6" length of weld shall not exceed the plate thickness.

Any discontinuity which produces signal amplitudes in excess of the ARL, Fig. A-13, is unacceptable.

When base metals of different thicknesses are welded together the thickness of the thinner member shall be used in determinations of acceptable limits of discontinuities.

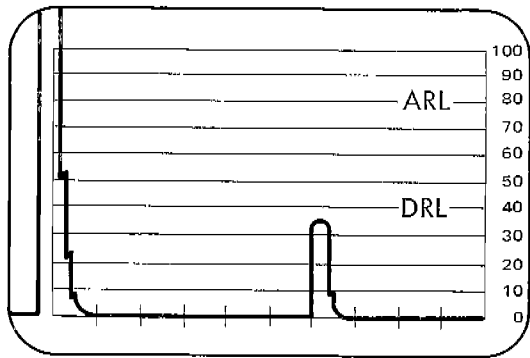
With the ultrasonic instrument calibrated in accordance with the procedures set forth in this Guide, usual signal amplitudes for specific type weld defects in relation to the ARL and DRL are illustrated in Fig. A-14.

When rejectable conditions are encountered, radiography may be useful in determining the nature and extent of the discontinuity.

RECORD OF INSPECTION

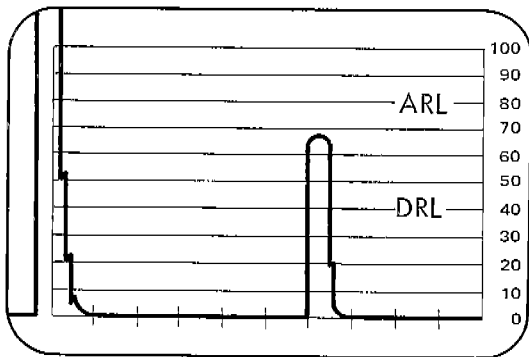
The record of each weld inspection should include:

1. Operator's identity
2. Date
3. Instrument identity
4. Transducer type, size, frequency and angle
5. Identification of test object
6. Location of the weld
7. Type of material
8. Thickness of base plate
9. Type of joint and configuration
10. Condition of the weld bead
11. Couplant
12. Flaw data
13. Inspection coverage, including reference points.



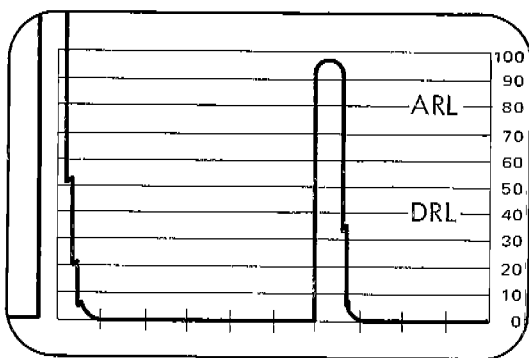
INDICATIONS BELOW THE DRL LEVEL ARE TO BE DISREGARDED

FIG. A-11. TYPICAL EXAMPLE OF ULTRASONIC INDICATIONS BELOW THE DRL.



INDICATIONS EQUAL TO OR GREATER THAN THE DRL LEVEL BUT LESS THAN THE ARL LEVEL REQUIRE A DETERMINATION OF DEFECT LENGTH AND SEPARATION DISTANCE

FIG. A-12. TYPICAL EXAMPLE OF ULTRASONIC INDICATIONS BELOW THE DRL BUT LESS THAN THE ARL



WELDS WHICH PRODUCE INDICATIONS EQUAL TO OR GREATER THAN THE ARL LEVEL ARE REJECTABLE

FIG. A-13. TYPICAL EXAMPLE OF ULTRASONIC INDICATIONS ABOVE THE ARL

WITH THE ULTRASONIC INSTRUMENT CALIBRATED IN ACCORDANCE WITH THE PROCEDURES SET FORTH IN THIS GUIDE, WELD DEFECTS OF THE TYPES LISTED WILL USUALLY PRODUCE SIGNAL AMPLITUDES IN RELATION TO THE ARL AND DRL LEVELS AS SHOWN:

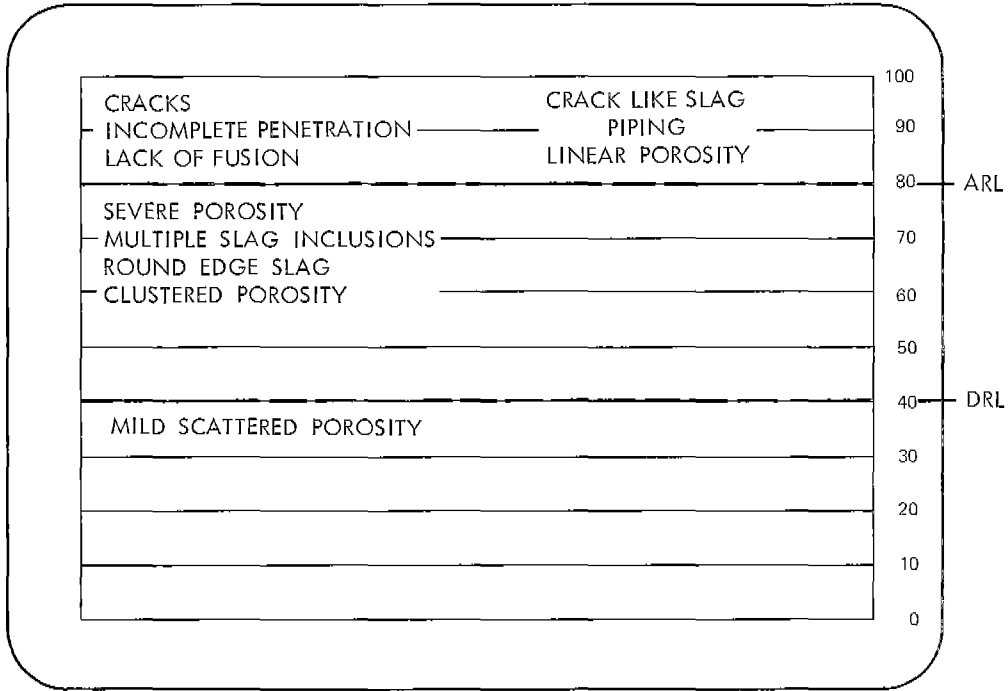


FIG. A-14. TYPICAL ULTRASONIC SIGNAL AMPLITUDES PRODUCED BY VARIOUS DEFECTS

GLOSSARY OF TERMS

- A-Scan - A method of data presentation on a cathode ray tube utilizing a horizontal base line which indicates elapsed time when reading from left to right. A vertical deflection from the base line indicates reflected signal amplitudes.
- Acoustically Similar - The same type of material as that to be inspected, or another material which has been experimentally proven to have acoustic velocity within $\pm 3\%$ and an attenuation for shear waves at the frequency to be used within ± 0.25 dB/inch of the material to be inspected.
- Active Element - The piezo-electrical material in the ultrasonic probe.
- ARL (Amplitude Reject Level) - The horizontal level on the cathode ray tube established by calibration. After calibration the ARL is 80% full screen height or 6 dB above the 40% line if a decibel attenuator is available.
- Decibel - A logarithmic function of the ratio of two values. In ultrasonics the two values are the signal amplitude and a reference amplitude.
- Decibel Attenuator - A gain control calibrated in decibels.
- Delay Controls - An electronic means of horizontally shifting the pattern obtained on the cathode ray tube.
- DRL (Disregard Level) - The horizontal level on the cathode ray tube established by calibration. After calibration the DRL is 40% of full screen height.
- Frequency - The number of cycles in a unit of time. In ultrasonics the frequency is usually expressed in Megahertz or MHz (million cycles per second).
- Longitudinal Waves - A wave form in which the particle motion is essentially in the same direction as the wave propagation.
- Megahertz (MHz) - A million cycles per second.
- Pulse Echo - The sending of sound into a material in the form of spaced pulses and recording the length of time necessary for each pulse to travel

through the medium and return to the source of energy.

- RMS (Root Mean Square) - A type of average used in describing surface roughness.
- Resulting Angle - The angle formed between the ultrasonic beam as it enters a medium of different characteristics than the one from which it came and a line drawn perpendicular to the interface between the two media.
- Scanning Surface - The surface of the base metal where the ultrasonic probe is manipulated.
- Shear Wave - A wave form in which the particle motion is perpendicular to the direction of wave travel.
- Straight Beam - An ultrasonic technique which does not involve an angle. The wave form is longitudinal.
- Transducer - A device for converting energy of one type into another. An ultrasonic transducer converts energy from electrical to mechanical and vice versa.

~~UNCLASSIFIED~~

Security Classification

| DOCUMENT CONTROL DATA - R&D | | |
|--|--|--|
| <i>(Security classification of title, body of abstract and indexing annotation must be entered when the overall report is classified)</i> | | |
| 1. ORIGINATING ACTIVITY (Corporate author) U. S. NAVAL ORDNANCE LABORATORY White Oak, Maryland | | 2a. REPORT SECURITY CLASSIFICATION Unclassified |
| | | 2b. GROUP |
| 3. REPORT TITLE A Guide For Ultrasonic Testing and Evaluation of Weld Flaws | | |
| 4. DESCRIPTIVE NOTES (Type of report and inclusive dates) Final Report-- | | |
| 5. AUTHOR(S) (Last name, first name, initial) R. A. Youshaw | | |
| 6. REPORT DATE August, 1970 | 7a. TOTAL NO. OF PAGES 12 | 7b. NO. OF REFS 0 |
| 8a. CONTRACT OR GRANT NO. | 9a. ORIGINATOR'S REPORT NUMBER(S) NOLTR 70-85 | |
| b. PROJECT NO. SF 35422306 TASK: 02022 | 9b. OTHER REPORT NO(S) (Any other numbers that may be assigned this report) SSC-213 | |
| c. | | |
| d. | | |
| 10. AVAILABILITY/LIMITATION NOTICES DISTRIBUTION OF THIS DOCUMENT, SSC-213, IS UNLIMITED. | | |
| 11. SUPPLEMENTARY NOTES | 12. SPONSORING MILITARY ACTIVITY Naval Ship Engineering Center | |
| 13. ABSTRACT This document presents procedures and acceptance limits for contact ultrasonic inspection of steel butt welds in the thickness range of 1/4 to 2 inches. The acceptance limits described in the following sections are compatible with those set forth in SSC-177, "Guide for Interpretation of Nondestructive Tests of Welds in Ship Hull Structures" for radiographic inspection and should therefore result in satisfactory ship welds. | | |

DD FORM 1473
1 JAN 64

UNCLASSIFIED

Security Classification

| 14. KEY WORDS | LINK A | | LINK B | | LINK C | |
|---------------|--------|----|--------|----|--------|----|
| | ROLE | WT | ROLE | WT | ROLE | WT |
| | | | | | | |

INSTRUCTIONS

1. **ORIGINATING ACTIVITY:** Enter the name and address of the contractor, subcontractor, grantee, Department of Defense activity or other organization (*corporate author*) issuing the report.

2a. **REPORT SECURITY CLASSIFICATION:** Enter the overall security classification of the report. Indicate whether "Restricted Data" is included. Marking is to be in accordance with appropriate security regulations.

2b. **GROUP:** Automatic downgrading is specified in DoD Directive 5200.10 and Armed Forces Industrial Manual. Enter the group number. Also, when applicable, show that optional markings have been used for Group 3 and Group 4 as authorized.

3. **REPORT TITLE:** Enter the complete report title in all capital letters. Titles in all cases should be unclassified. If a meaningful title cannot be selected without classification, show title classification in all capitals in parenthesis immediately following the title.

4. **DESCRIPTIVE NOTES:** If appropriate, enter the type of report, e.g., interim, progress, summary, annual, or final. Give the inclusive dates when a specific reporting period is covered.

5. **AUTHOR(S):** Enter the name(s) of author(s) as shown on or in the report. Enter last name, first name, middle initial. If military, show rank and branch of service. The name of the principal author is an absolute minimum requirement.

6. **REPORT DATE:** Enter the date of the report as day, month, year; or month, year. If more than one date appears on the report, use date of publication.

7a. **TOTAL NUMBER OF PAGES:** The total page count should follow normal pagination procedures, i.e., enter the number of pages containing information.

7b. **NUMBER OF REFERENCES:** Enter the total number of references cited in the report.

8a. **CONTRACT OR GRANT NUMBER:** If appropriate, enter the applicable number of the contract or grant under which the report was written.

8b, 8c, & 8d. **PROJECT NUMBER:** Enter the appropriate military department identification, such as project number, subproject number, system numbers, task number, etc.

9a. **ORIGINATOR'S REPORT NUMBER(S):** Enter the official report number by which the document will be identified and controlled by the originating activity. This number must be unique to this report.

9b. **OTHER REPORT NUMBER(S):** If the report has been assigned any other report numbers (*either by the originator or by the sponsor*), also enter this number(s).

10. **AVAILABILITY/LIMITATION NOTICES:** Enter any limitations on further dissemination of the report, other than those

imposed by security classification, using standard statements such as:

- (1) "Qualified requesters may obtain copies of this report from DDC."
- (2) "Foreign announcement and dissemination of this report by DDC is not authorized."
- (3) "U. S. Government agencies may obtain copies of this report directly from DDC. Other qualified DDC users shall request through _____."
- (4) "U. S. military agencies may obtain copies of this report directly from DDC. Other qualified users shall request through _____."
- (5) "All distribution of this report is controlled. Qualified DDC users shall request through _____."

If the report has been furnished to the Office of Technical Services, Department of Commerce, for sale to the public, indicate this fact and enter the price, if known.

11. **SUPPLEMENTARY NOTES:** Use for additional explanatory notes.

12. **SPONSORING MILITARY ACTIVITY:** Enter the name of the departmental project office or laboratory sponsoring (*paying for*) the research and development. Include address.

13. **ABSTRACT:** Enter an abstract giving a brief and factual summary of the document indicative of the report, even though it may also appear elsewhere in the body of the technical report. If additional space is required, a continuation sheet shall be attached.

It is highly desirable that the abstract of classified reports be unclassified. Each paragraph of the abstract shall end with an indication of the military security classification of the information in the paragraph, represented as (TS), (S), (C), or (U).

There is no limitation on the length of the abstract. However, the suggested length is from 150 to 225 words.

14. **KEY WORDS:** Key words are technically meaningful terms or short phrases that characterize a report and may be used as index entries for cataloging the report. Key words must be selected so that no security classification is required. Identifiers, such as equipment model designation, trade name, military project code name, geographic location, may be used as key words but will be followed by an indication of technical context. The assignment of links, roles, and weights is optional.

SHIP RESEARCH COMMITTEE
Maritime Transportation Research Board
National Academy of Sciences-National Research Council

The Ship Research Committee has technical cognizance of the Ship Structure Committee's Research Program. This entails recommending research objectives, preparing project prospectuses, evaluating proposals, providing liaison and technical guidance, reviewing project reports, and stimulating productive avenues of research.

PROF. R. A. YAGLE, Chairman
*Professor of Naval Architecture
University of Michigan*

MR. D. FAULKNER
*Research Associate
Massachusetts Institute of
Technology*

DR. H. N. ABRAMSON
*Director, Dept. of Mechanical Sciences
Southwest Research Institute*

PROF. W. J. HALL
*Professor of Civil Engineering
University of Illinois*

MR. W. H. BUCKLEY
*Chief, Structural Criteria and Loads
Bell Aerosystems Co.*

MR. J. E. HERZ
*Chief Structural Design Engineering
Sun Shipbuilding & Dry Dock Company*

DR. D. P. CLAUSING
*Senior Scientist
U.S. Steel Corporation*

MR. G. E. KAMPSCHAEFER, JR.
*Manager, Application Engineering
ARMCO Steel Corporation*

MR. A. E. COX
*Senior Program Manager
Newport News Shipbuilding & Dry Dock Co.*

PROF. B. R. NOTON
*Prof. of Aerospace & Civil Engineering
Washington University*

MR. J. F. DALZELL
*Senior Research Engineer
Stevens Institute of Technology*

MR. W. W. OFFNER
Consulting Engineer

DR. W. D. DOTY
*Senior Research Consultant
U.S. Steel Corporation*

CDR. R. M. WHITE, USCG
*Chief, Applied Engineering Section
U.S. Coast Guard Academy*

MR. F. D. DUFFEY
*Welding Engineer
Ingalls Shipbuilding Corporation*

MR. R. W. RUMKE
*Executive Secretary
Ship Research Committee*

This project was coordinated under the guidance of the following Advisory Group III, "Metallurgical Studies" membership:

PROF. W. J. HALL, Chairman, *Professor of Civil Engineering, University of Illinois*

DR. D. P. CLAUSING, *Senior Scientist, U.S. Steel Corporation*

DR. W. D. DOTY, *Senior Research Consultant, U.S. Steel Corporation*

MR. F. D. DUFFEY, *Welding Engineer, Ingalls Shipbuilding Corporation*

MR. G. E. KAMPSCHAEFER, JR., *Manager, Application Engineering, ARMCO Steel Corporation*

MR. W. W. OFFNER, *Consulting Engineer*

PROF. A. W. PENSE, *Professor of Metallurgy, Lehigh University*

These documents are distributed by the Clearinghouse, Springfield, Va. 22151. These documents have been announced in the Clearinghouse journal U.S. Government Research & Development Reports (USGRDR) under the indicated AD numbers.

- SSC-199, *Study of the Factors Which Affect the Adequacy of High-Strength Low-Alloy Steel Weldments for Cargo Ship Hulls* by A. L. Lowenberg, E. B. Norris, A. G. Pickett and R. D. Wylie, August 1969. AD 692262.
- SSC-200, *Index of Ship Structure Committee Reports* January 1969. AD 683360
- SSC-201, *Midship Wave Bending Moment in a Model of the Cargo Ship "Wolverine State" Running at Oblique Headings in Regular Waves* by M. J. Chiocco and E. Numata. September 1969. AD 695123.
- SSC-202, *Midship Wave Bending Moments in a Model of the Cargo Ship "California Bear" Running at Oblique Headings in Regular Waves* by E. Numata and W. F. Yonkers. November 1969. AD 698847.
- SSC-203, *Annual Report of the Ship Structure Committee.* November. 1969. AD 699240.
- SSC-204, *Simulated Performance Testing for Ship Structure Components* by R. Sherman. 1970. AD 705398.
- SSC-205, *Structural Design Review of Long, Cylindrical, Liquid-Filled Independent Cargo Tank Barges* by C. W. Bascom. 1970. AD 708565.
- SSC-206, *Permissible Stresses and Their Limitations* by J. J. Nibbering. 1970.
- SSC-207, *Effect of Flame and Mechanical Straightening on Material Properties of Weldments* by H. E. Pattee, R. M. Evans, and R. E. Monroe. 1970.
- SSC-208, *Slamming of Ships: A Critical Review of the Current State of Knowledge* by J. R. Henry, and F. C. Bailey. 1970.
- SSC-209, *Results From Full-Scale Measurements of Midship Bending Stresses on Three Dry Cargo Ships* by I. J. Walters and F. C. Bailey. 1970.
- SSC-210, *Analysis of Slamming Data from the "S.S. Wolverine State"* by J.W. Wheaton, C. H. Kano, P. T. Diamant, F. C. Bailey, 1970.
- SSC-211, *Design & Installation of a Ship Response Instrumentation System Aboard the Container Vessel S.S. Boston*, by R. A. Fain, J. Q. Cragin and B. H. Schofield. 1970.
- SSC-212, *Ship Response Instrumentation Aboard the Container Vessel S.S. Boston: Results from the 1st Operational Season In North Atlantic Service*, by R. A. Fain, J. Q. Cragin, and B. H. Schofield. 1970.